

This document will guide you in setting up and securing your wireless home network. It comprises of setting up the wireless networking features of your Netgear wireless DSL router and configuring your PC to connect to your wireless network securely.

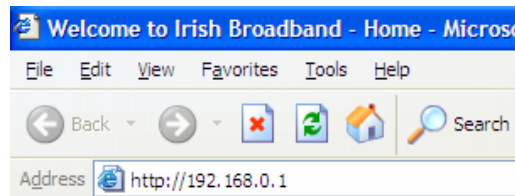
To set up a wireless network you will need the following:

1. A wireless access point (e.g. a Netgear wireless DSL router)
2. A wireless enabled PC (either a laptop with built in wireless capability or a laptop/PC with a functioning wireless adapter e.g. a wireless PC card or USB adapter). *For further information please contact your PC or wireless adapter vendor.*

How do I set up my Wireless Network?

The following will guide you in setting up and securing your wireless network. Once completed you should be able to connect to your broadband service wirelessly and securely.

1. Connect your PC to one of the LAN ports of your wireless DSL router and ensure your router is powered on (*this will probably already be connected after you have configured your modem or from just using your broadband with a cable connection*)
2. Open an internet browser, such as 'Internet Explorer' and enter **192.168.0.1** into the address field. Press 'return'



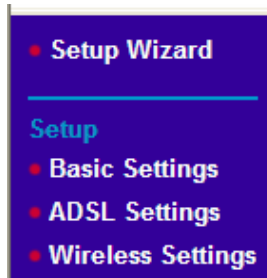
3. Enter the following Username and Password and click 'OK':

Username: Admin

Password: Password



- From the left hand menu click **'Wireless Settings'**



- Here's where we're going to set your wireless settings on the DSL wireless router: (referring to the following figure)

- In the field **Name (SSID)** enter the name you'd like to call your wireless network – this will be visible when you search for a wireless network with your PC
- Complete the remaining fields as per the following figure

A screenshot of a web interface titled 'Wireless Settings'. It has a light blue header. Below the header, there's a section for 'Wireless Network' with four fields: 'Name (SSID):' with a text input containing 'NETGEAR', 'Region:' with a dropdown menu showing 'Europe', 'Channel:' with a dropdown menu showing '11', and 'Mode:' with a dropdown menu showing 'g & b'.

- Make sure the **'Enable Wireless Access Point'** and **'Allow Broadcast of Name (SSID)'** boxes are checked

A screenshot of a web interface showing configuration options. It has a light blue header. Below the header, there's a section for 'Wireless Access Point' with three checkboxes: 'Enable Wireless Access Point' (checked), 'Allow Broadcast of Name (SSID)' (checked), and 'Wireless Isolation' (unchecked). Below this is a section for 'Wireless Station Access List' with a 'Setup Access List' button. Then there's a section for 'Security Options' with four radio buttons: 'Disable', 'WEP (Wired Equivalent Privacy)', 'WPA-PSK (Wi-Fi Protected Access Pre-Shared Key)' (selected), and 'WPA-802.1x'. Below this is a section for 'WPA-PSK Security Encryption' with a 'Network Key (8 ~ 63 characters)' text input. At the bottom are 'Apply' and 'Cancel' buttons.

- Now we're going to set up security on your wireless network. Irish Broadband recommends implementing **WPA-PSK** as your security choice. For further information on security options see: www.netgear.co.uk.


Some users may be unable to implement **WPA-PSK** as a result of using some older wireless adapters (pre-2003) or operating systems. In this case Irish Broadband recommends implementing **WEP** security in place of the preferred **WPA-PSK** security (see Irish Broadband's WEP Setup Guide www.irishbroadband.ie/support)

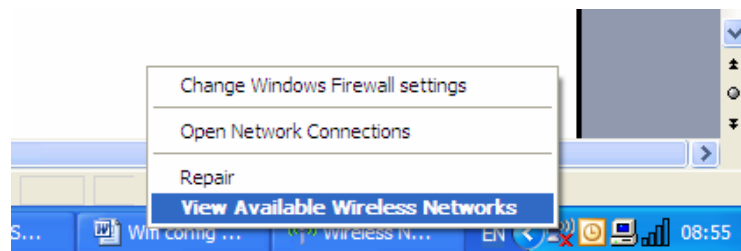
- Check the **WPA-PSK** option under Security Options. Once you've checked the **WPA-PSK** option you'll be presented with the **WPA-PSK Security Encryption** section (see the previous figure above).

Enter a security password of your choice in the **Network Key** field. The password must be a minimum of 8 characters and Irish Broadband recommend using an alpha-numeric password.

- Once you've entered your password click the '**Apply**' button (take a note of this password as you will need it to connect to your wireless network for the first time)
- Then click '**Logout**' at the bottom of the left-hand menu bar



- Now you are ready to configure your PC to connect securely to your wireless network.
- Right-click the wireless connection icon:  in the bottom right-hand corner of the screen, and then click '**View Available Wireless Networks**'

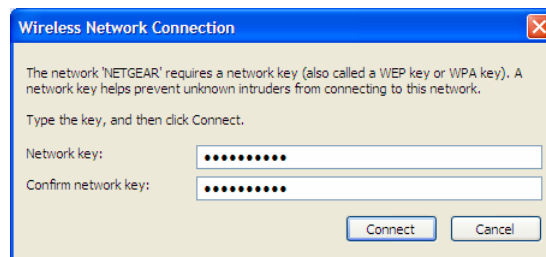


- A window will open displaying all the wireless networks in range of your PC – Click '**Refresh Network List**' from the Network Tasks menu to make sure you have the updated list of available Networks

If the window gives a message that 'No wireless networks were found in range' - double check that you have completed all the steps above correctly and that your PC's wireless adapter is switched on and functioning (see manufacturer's instructions).

If the window gives a message that 'Windows cannot configure this wireless connection' – see the section below: **Using Windows to configure your Wireless Network Connection**

14. Double-click on the **WPA** secured wireless network that you have just set up on your Netgear wireless DSL router – You can identify your wireless network by the Name (SSID) you set in point 5 above
15. You will be presented with a window where you should enter the password (network key) you decided on when setting up in point 8 above. Re-enter the password where you are asked to '**Confirm Network Key**' – Click '**Connect**'



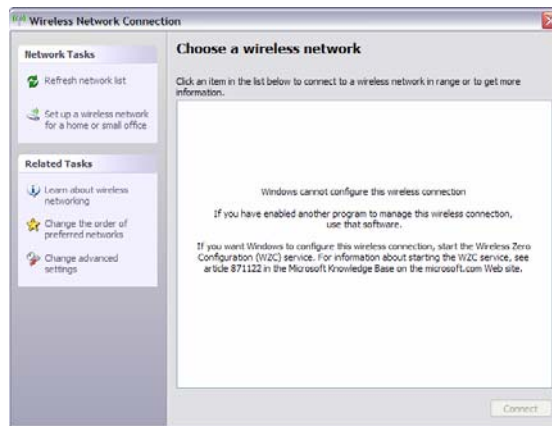
16. Your PC will then attempt to connect to your wireless network securely – it may take a few moments before you are 'connected' and ready to start surfing.

If, after completing the previous steps correctly, you are still unable to connect using your wireless network see the WEP Set-up Guide available at: www.irishbroadband.ie/support

Using Windows to configure your Wireless Network Connection

The Wireless Zero Configuration service allows your wireless adapter to automatically select and connect to preferred networks using the Windows Wireless Network management tool. Where Windows is not the default system to manage your wireless network you will be presented with the following screen with the '*Windows cannot configure this wireless connection*' error.

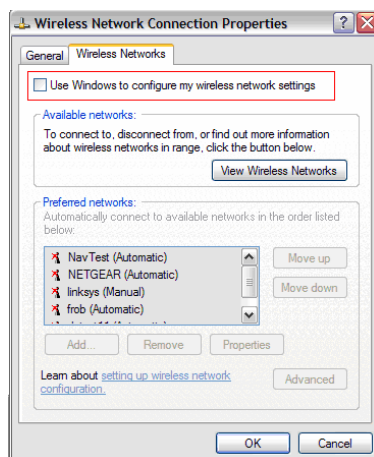
You will typically encounter this problem where the wireless adapter you are using with your PC to connect to the wireless network includes specific software to manage your wireless networks.



In this case you have a choice to either **(a)** use the specific software installed with your wireless adapter (see *manufacturer's documentation for instructions*) or **(b)** you can enable Windows to manage your wireless network with your wireless adapter.

The following will guide you in enabling Windows to manage your wireless network.

1. Click '**Change Advanced Settings**' in the **Related Tasks** menu. The 'Wireless Network Connection Properties' window will open. See the following figure below.
2. Click the '**Wireless Networks**' tab. You need to change the settings in windows Wireless Configuration to '**Use Windows to configure my wireless network setting**' by placing a '**tick**' beside it, highlighted in red below. Click '**OK**'.



If you are unable to check this box to 'Use Windows to configure my wireless network settings' or this section is 'greyed-out' and inaccessible you need to configure windows to allow you to use this functionality. The following link gives detailed steps to complete this configuration: <http://support.microsoft.com/kb/871122/en-us>

3. Once you have ticked this box and clicked 'Ok' you are ready to configure your wireless network connection – Start at point 11 above in the **How do I set up my Wireless Network?** section.

If you need further assistance please contact our customer care team on 1890 56 44 56